



*Creating a New Americas-Focused Silver-Gold
Exploration and Development Company*

CORPORATE PRESENTATION

April 2024

www.pinnaclesilverandgold.com

TSXV: PINN

OTC: NRGOF

FSX: P9J

Forward Looking Statement

Except for historical information contained herein, this presentation contains forward looking statements including but not limited to comments regarding predictions and projections. Forward-looking statements address future events and conditions and therefore involve inherent risks and uncertainties. Although Newrange Gold believes that such expectations are reasonable, there can be no assurance that such expectations will prove to be correct, and therefore actual results may differ materially from those currently anticipated in such statements. You are cautioned not to place undue reliance on any such forward looking statements, whether made in this presentation or in any question and answer period related to this presentation.

District-Scale Silver and Gold Exploration and Development in the Americas

- Past-producing Argosy Gold Mine, in the prolific **Red Lake District**, has significant depth potential
- Eight kilometre long, untested gold target also in **Red Lake** area of NW Ontario
- Actively seeking new acquisition(s) in the Americas with the potential to offer significant upside

Board and Management



Robert Archer,
President & CEO, Director

- More than 45 years' experience in the mining industry, working throughout the Americas
- Co-founded and built Great Panther Mining Limited from concept to a mid-tier precious metals producer with \$600 M market cap
- Professional Geologist with an Honours BSc from Laurentian University in Sudbury, Ontario



Colin Jones,
Non-executive Director

- Principal Consultant for Orimco Resource Investment Advisors, Perth, Australia
- 40 years' experience as a mining, exploration and consulting geologist in a number of different geological environments on all continents
- Mr. Jones holds a Bachelor of Science (Earth Sciences) degree from Massey University, NZ



Ron Schmitz,
Non-executive Director

- Principal and President of ASI Accounting Services Inc., providing administrative, accounting and office services to public and private companies
- Served as a Director and/or Chief Financial Officer of various public companies since 1997
- Associate of Commerce, Vancouver Island University



Dave Cross,
CFO & Corporate Secretary

- CPA & CGA with >21 years in the junior sector
- Partner of Cross Davis and Company LLP Chartered Professional Accountants, specializing in accounting and management services for private and publicly-listed companies within the mining industry

Share Structure

	No. Shares
Shares Issued	43,521,072
Warrants	6,724,360
Options	295,583
Shares Fully Diluted*	50,262,099

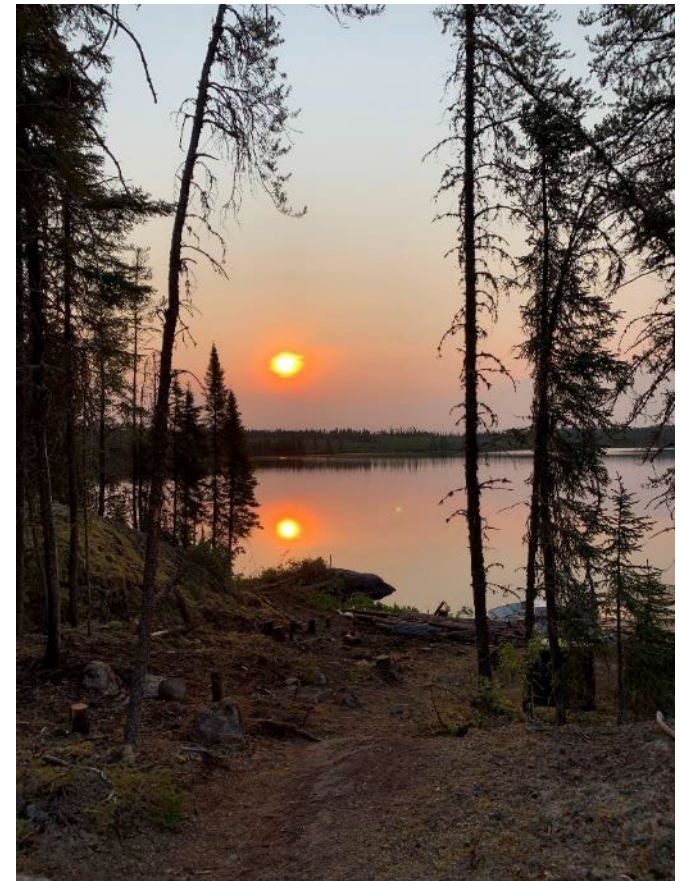
*Fully Diluted number includes Finders Shares from 2023 Bridge Financing

As of April 21, 2024

- Recent share price CA\$0.03
- Market Capitalization ~CA\$1.3 million

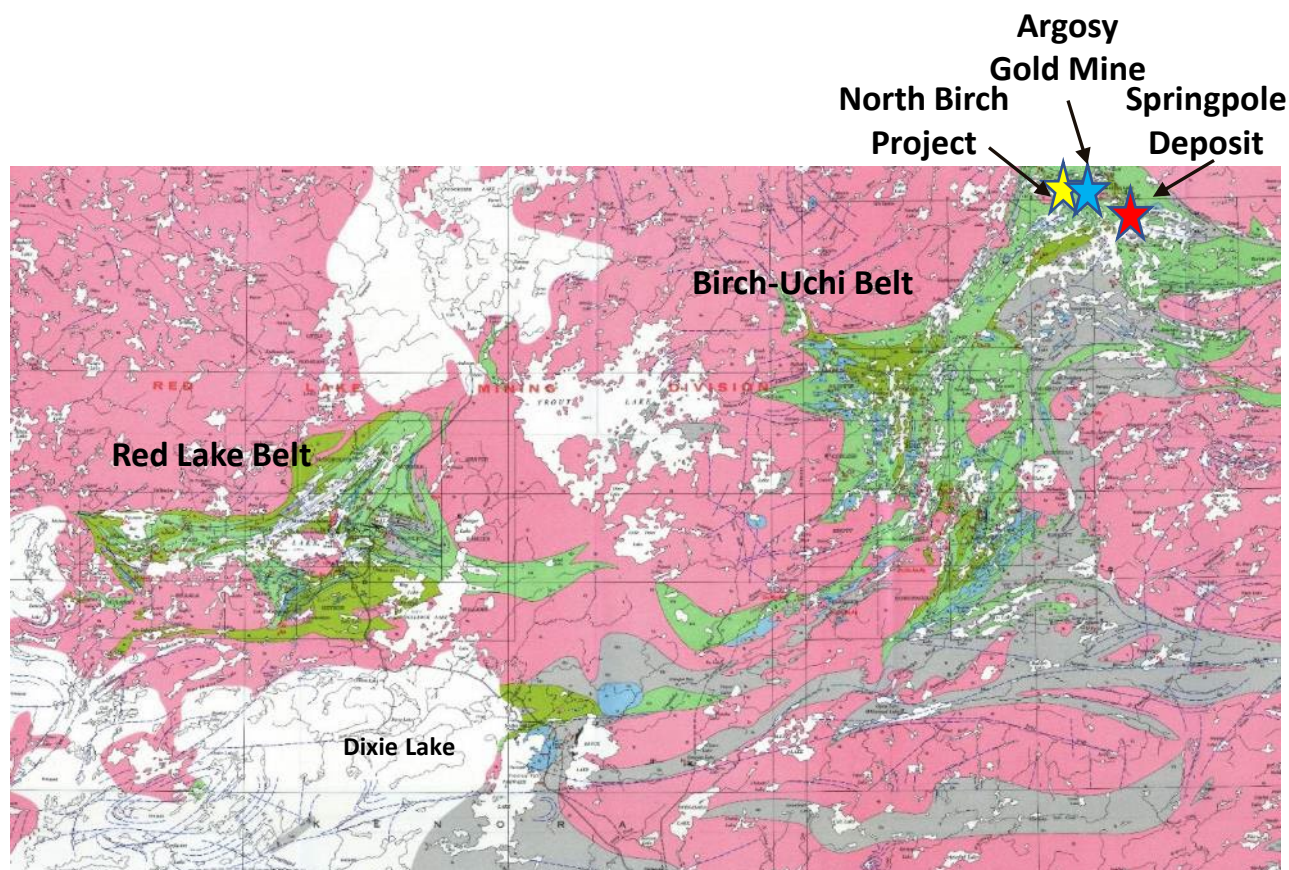
Tightly held

- Insiders own 18%
- Institutional ownership ~5%
- Closely held >30%

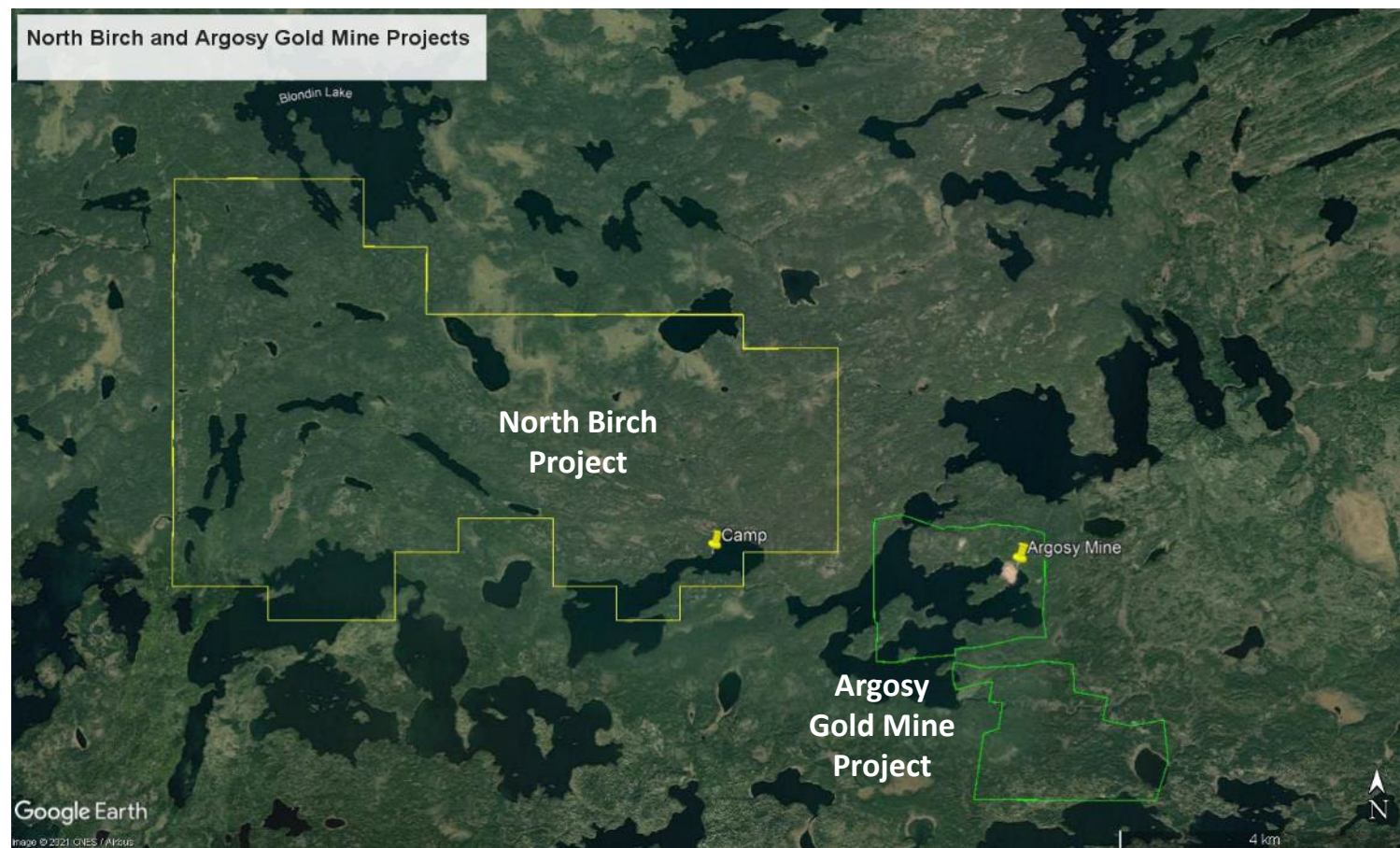


Birch-Uchi Greenstone Belt, Red Lake District

- Next greenstone belt to the east of Red Lake
- Similar geology but three times the size
- Poorly explored due to limited access
- Springpole Gold Deposit (First Mining Gold – 4.9 Moz Au) just 12 km to the southeast of North Birch & 10km from Argosy
- Argosy Gold Mine – most significant gold producer in belt. Closed in 1952.



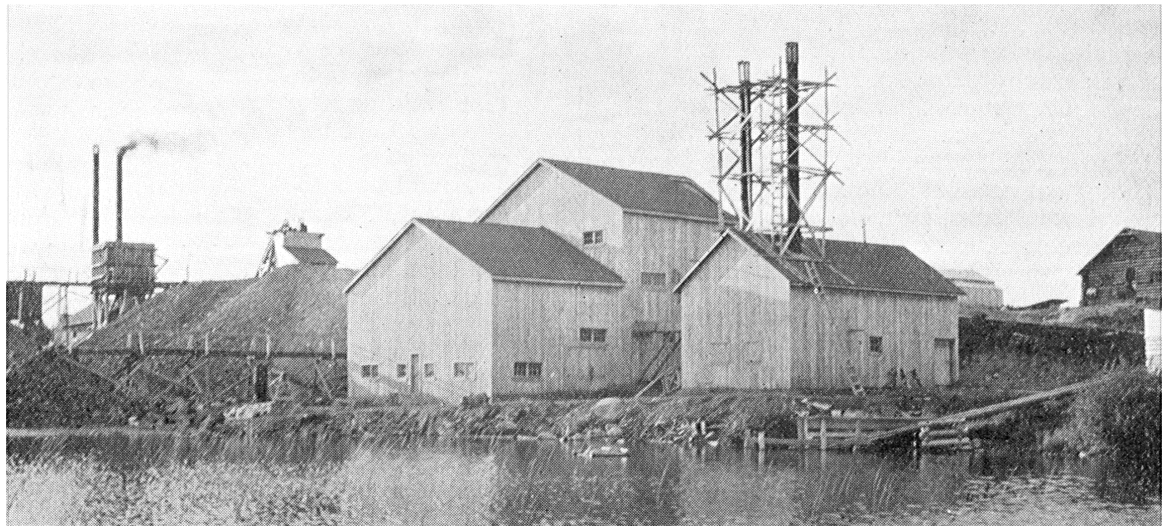
North Birch & Argosy Gold Mine Projects



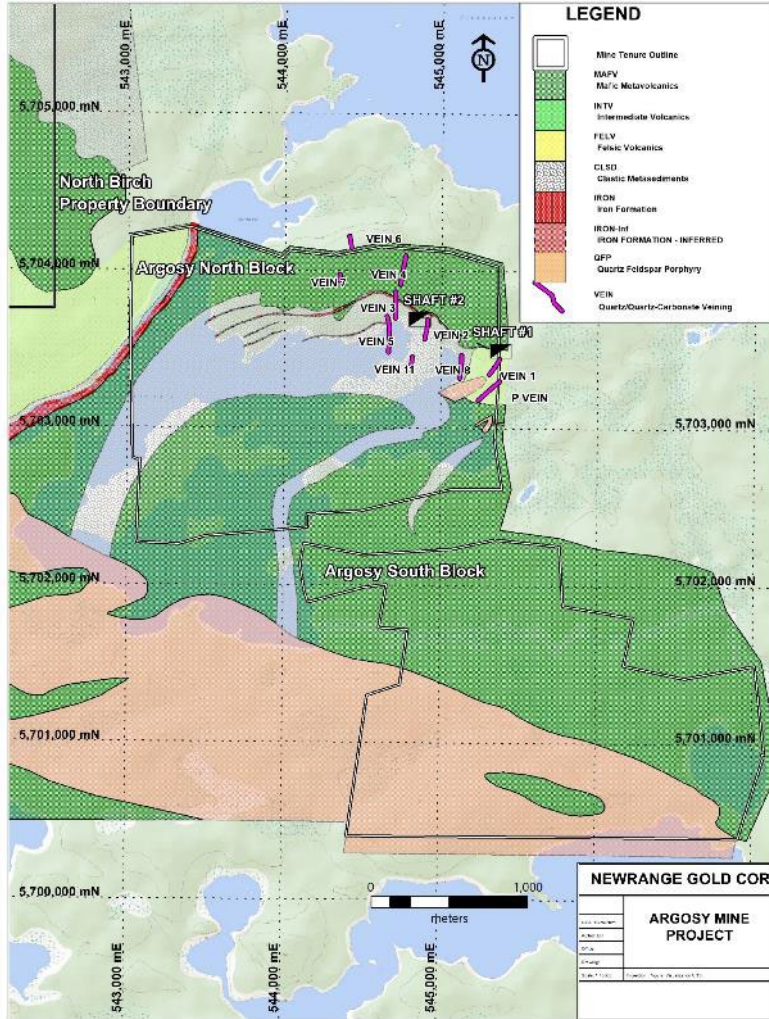
- Projects are almost contiguous & comprise a total of 4,454 hectares

Argosy Gold Mine Project

- Past producing (1931 - 1952) gold mine adjacent to North Birch Project
- 101,875 oz of gold produced at 12.7 g/t
- Newrange owns 100% subject to a 2.5% NSR
- Only 72 historic drill holes (>10,500 m) and no work on property since 2004

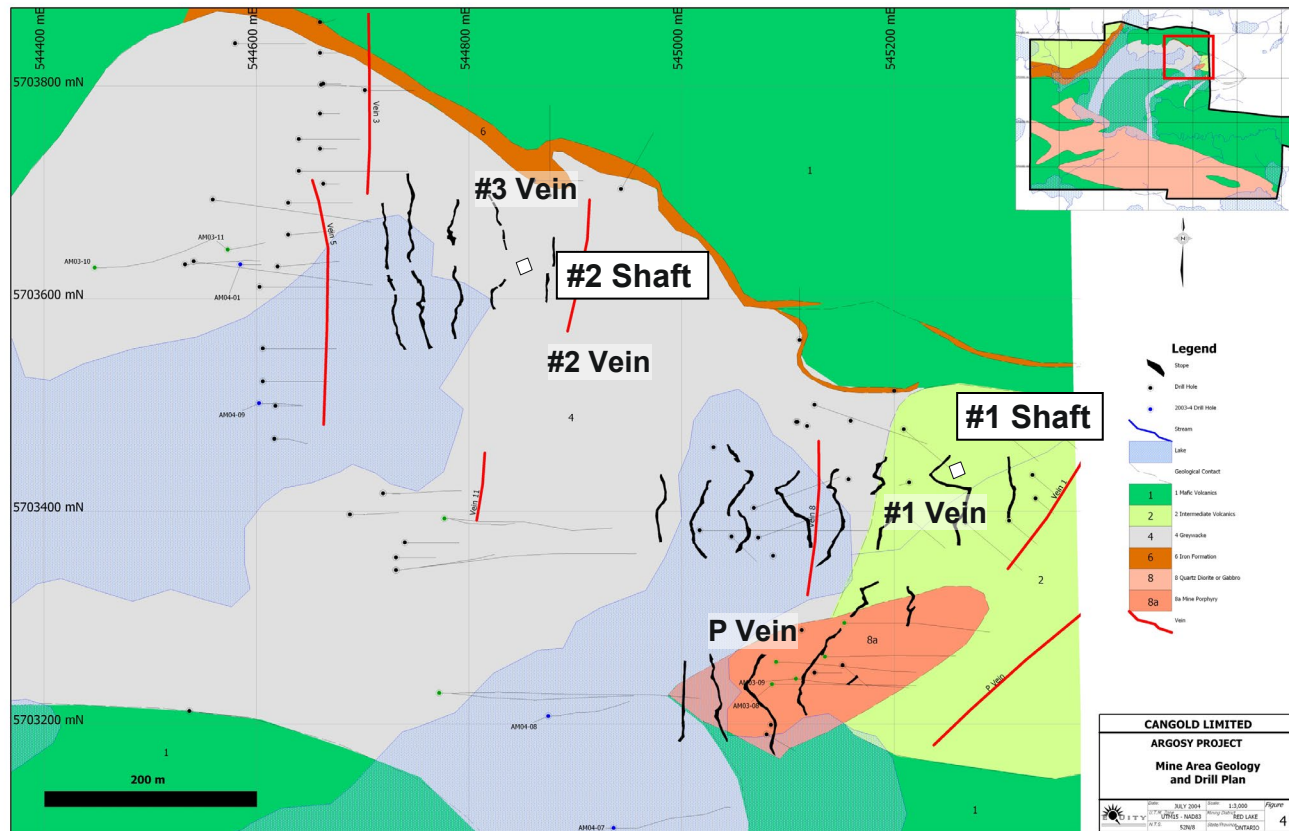


Argosy Gold Mine – Property Geology



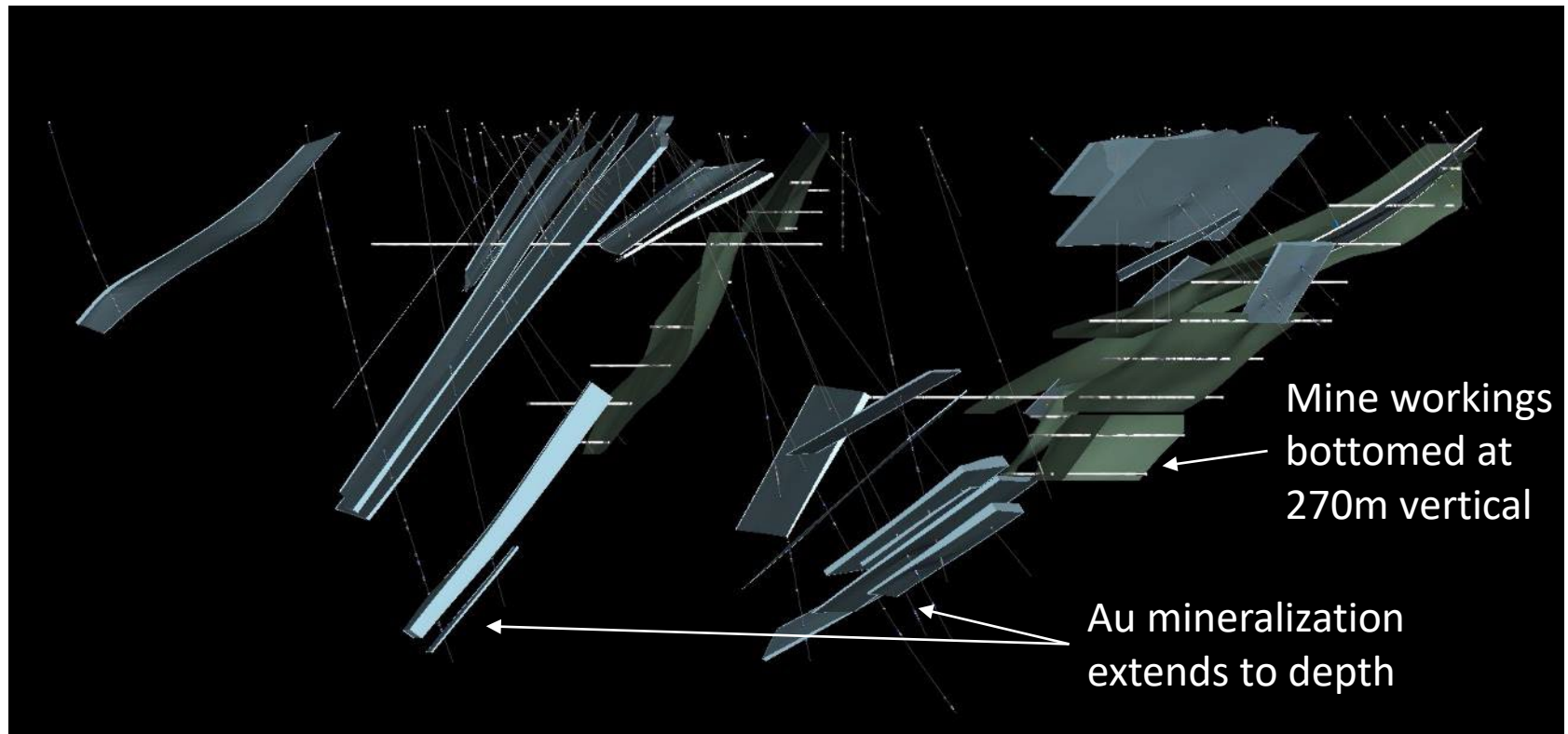
- Property lies immediately southeast of North Birch Project
- Underlain predominantly by mafic to intermediate volcanics, greywacke and iron formation
- Quartz-feldspar porphyry is spatially associated with some of the best gold mineralization but not fully explored
- Previous drilling has indicated that gold mineralization extends below the mine workings and is open to depth

Argosy Gold Mine – Vein Locations



- Most of the veins occur in N-S fractures dipping 30-80° to the west
- Quartz is accompanied by variable amounts of arsenopyrite, pyrrhotite, chalcopyrite, pyrite, sphalerite, galena and native gold

Argosy Gold Mine – Depth Potential



- Only 4 veins mined, to a maximum depth of about 270 metres
- 2002-04 drilling intersected multiple new, unmined veins and gold mineralization extending to a vertical depth of 400 m
- [3D Leapfrog model](#) illustrates depth potential below old mine workings

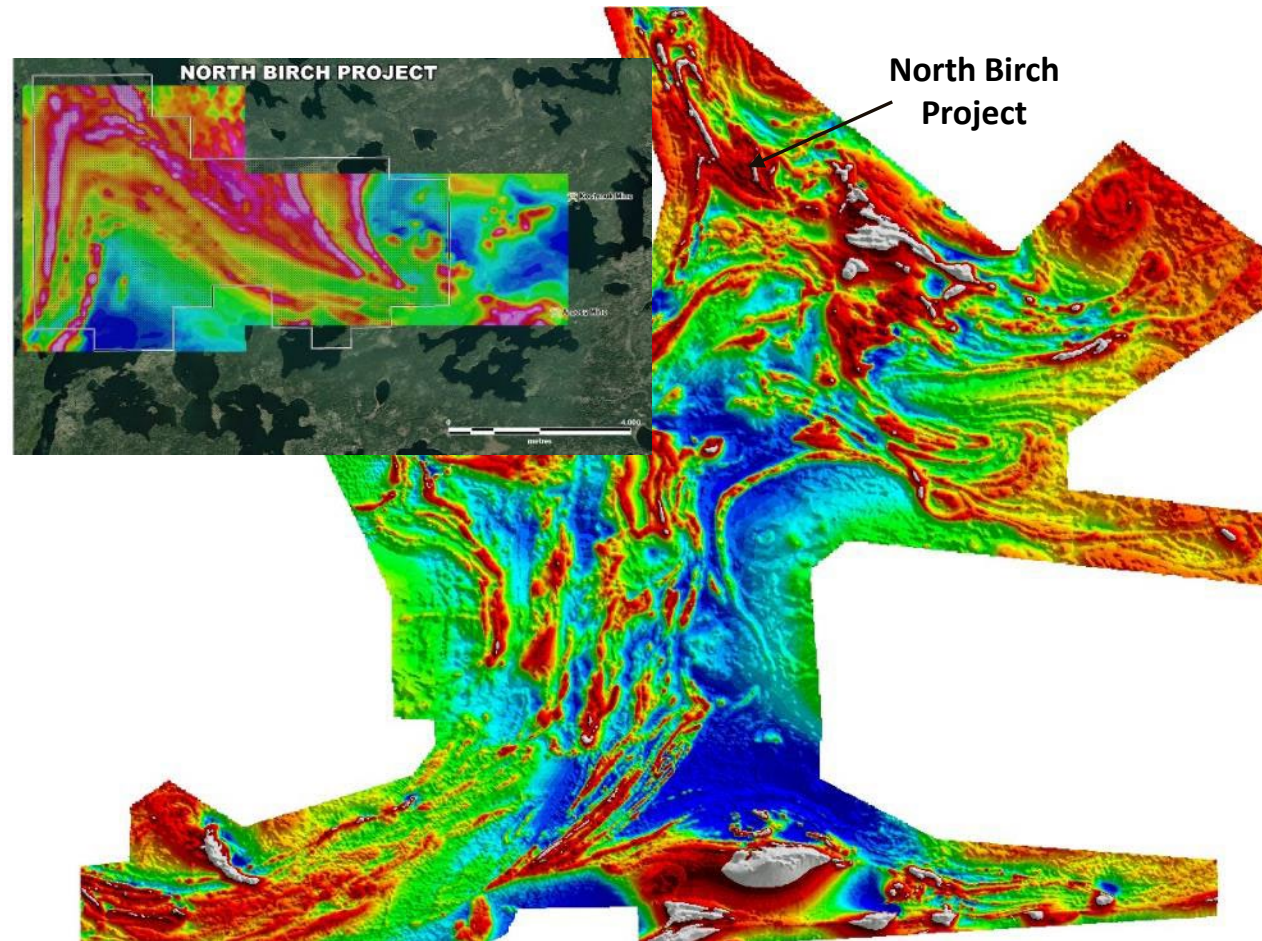
Argosy Gold Mine – Historical Drilling Highlights

HOLE#	FROM	TO	INTERVAL	Weighted Avg g/t	Vein/Zone
AM02-01	284.59	287.00	2.41	8.22	Vein # 8
Including	286.45	287.00	0.55	28.16	
AM02-02	70.73	71.48	0.75	9.11	Vein # 11
AM02-07	180.80	188.60	7.80	4.27	Vein # 3
Including	183.80	185.50	1.70	14.67	Vein # 3
AM02-07	337.00	340.45	3.45	5.67	Vein #2
Including	338.40	339.95	1.55	11.75	Vein #2
AM02-07	355.10	357.40	2.30	4.65	New Zone
Including	356.70	357.40	0.70	14.39	
AM02-08	56.30	57.40	1.10	8.12	Vein #3
AM03-01A	366.78	375.35	8.57	3.74	P Vein
Including	368.30	371.28	2.98	9.86	
AM03-02	251.58	252.00	0.42	8.03	#1 Vein
AM03-02	352.54	354.34	1.80	5.09	P Vein
AM03-03	25.30	27.93	2.63	10.95	#11 Vein
Including	26.75	27.43	0.68	31.44	
AM03-03	228.37	229.42	1.05	4.64	#8 Vein
Including	228.37	228.88	0.51	9.19	
AM03-04	25.91	28.14	2.23	5.40	#11 Vein
Including	26.42	27.03	0.61	12.28	
AM03-05	99.60	101.00	1.40	11.31	Contact Zone
Including	99.60	100.08	0.48	32.44	
AM03-05	171.28	171.62	0.34	73.06	P Vein
AM04-01	49.9	50.2	0.30	52.70	Cabin Zone - #5 Vein?
AM04-01	75.0	76.3	1.30	9.15	Cabin Zone - #5 Vein?
AM04-08	320.75	328.15	7.40	3.59	Porphyry Point
Including	320.75	322.4	1.65	14.15	

North Birch Gold Project – Regional Setting

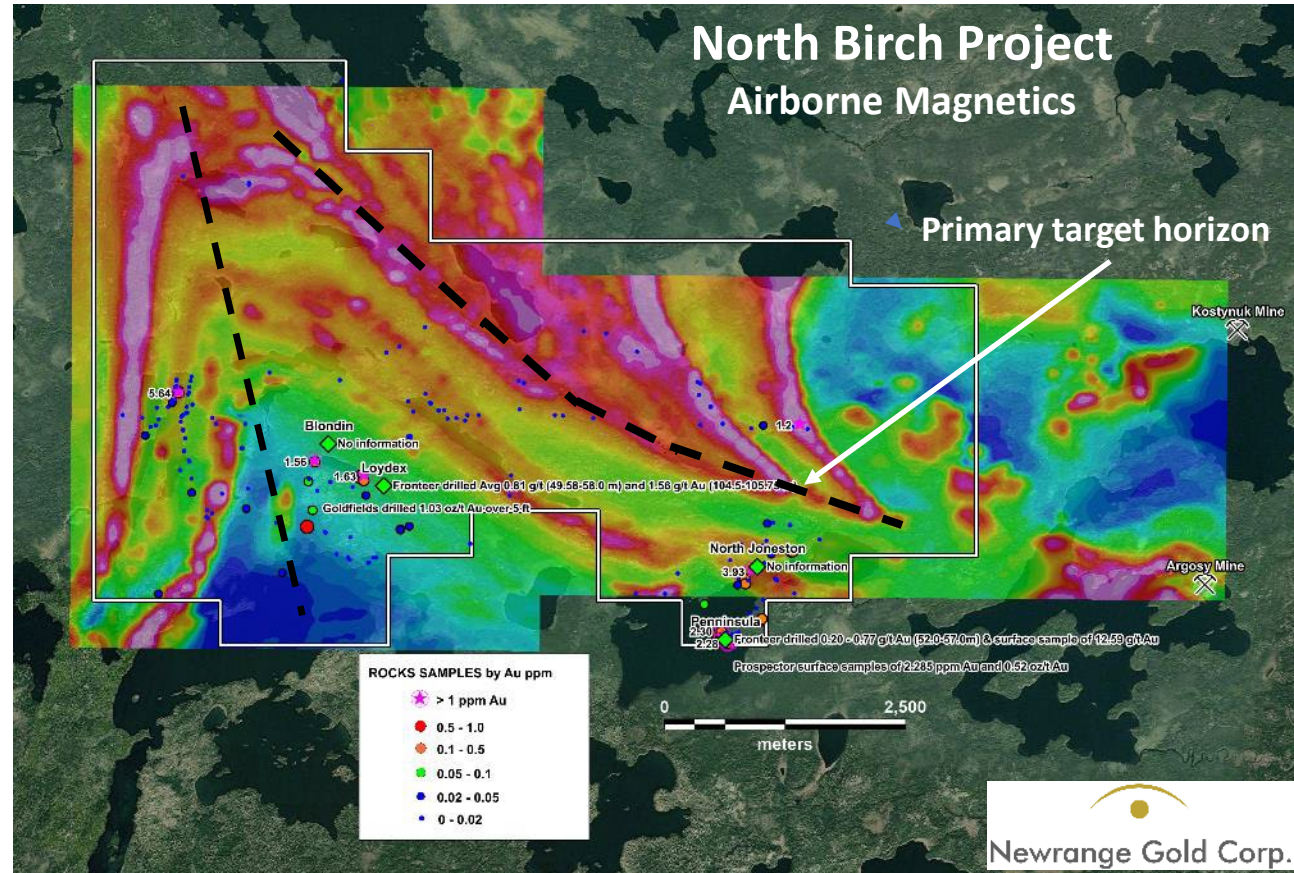
Iron Formation Target

- Folded Iron Formation (IF) is an attractive target for gold mineralization
- IF hosted Au deposits are well known throughout the world
- Largest is Homestake Mine, S. Dakota: 40+ Moz
- Similar structural setting to Musselwhite Mine (Newmont-Goldcorp; 7+ Moz in past production & Reserves), also in NW Ontario



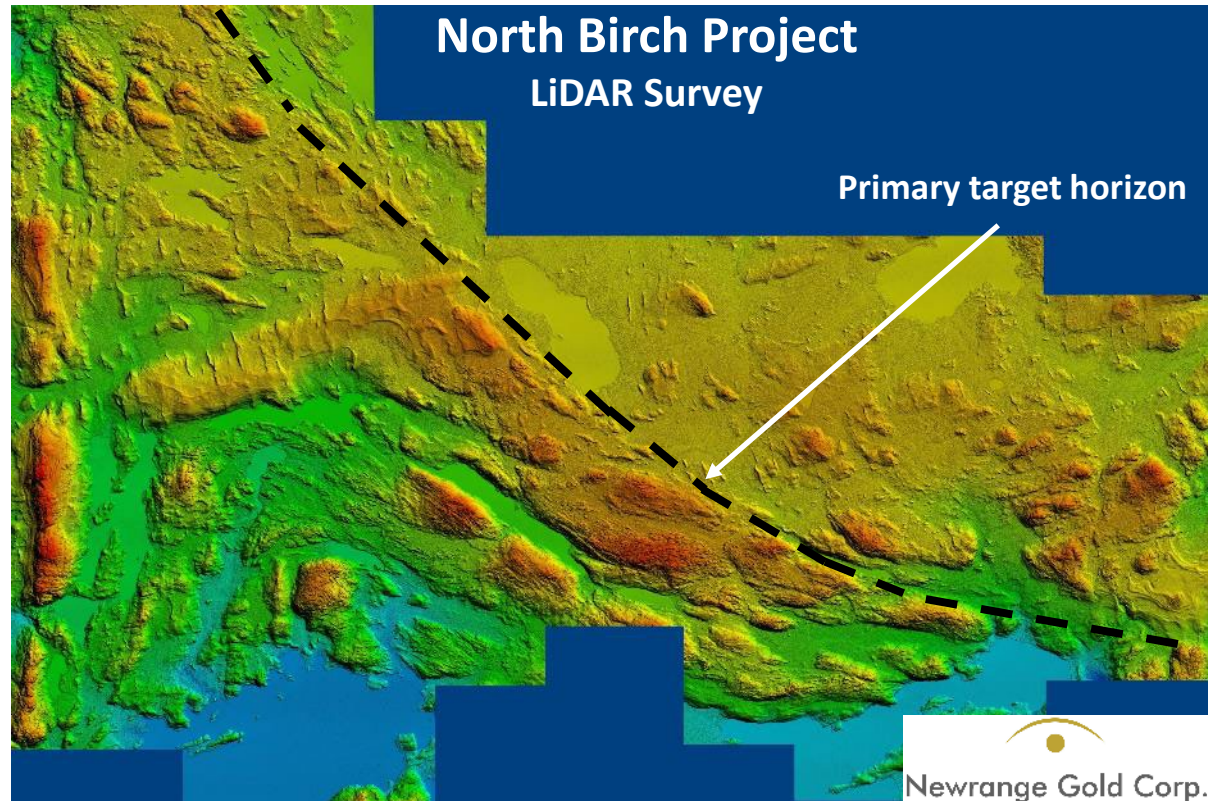
North Birch Folded & Sheared Iron Formation

- 3,850 ha covering the entire Iron Formation package
- 100% owned subject to 2% NSR
- Several structures cutting the IF
- Only a few kilometres from Argosy Mine & Kostynuk Mine - both show Au in IF
- Up to 35 g/t Au over 1.6m in historic drilling south of IF; 5.64 g/t Au in grab sample of pyritic IF at H Lake



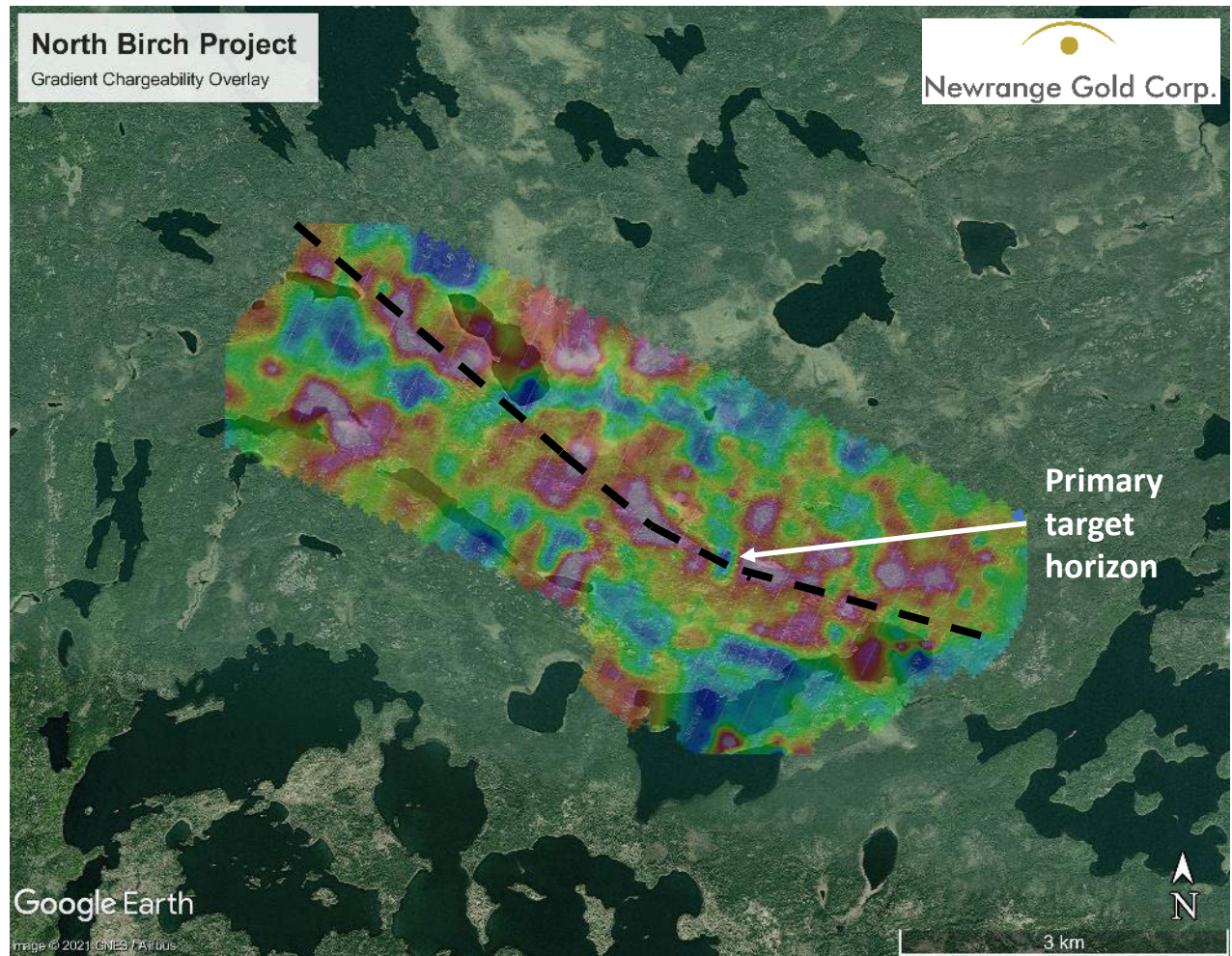
North Birch Folded & Sheared Iron Formation

- LiDAR survey flown in 2021 shows pronounced break in topographic features following the trace of the iron formation - interpreted as a shear zone, >8km long
- Iron formations are known to be excellent physical and chemical traps for gold mineralization
- As gold is present on the property as well as at the Argosy Mine and Springpole Deposit to the east, there is excellent potential for the North Birch iron formation to be mineralized also
- Other targets exist in the western portion of the property

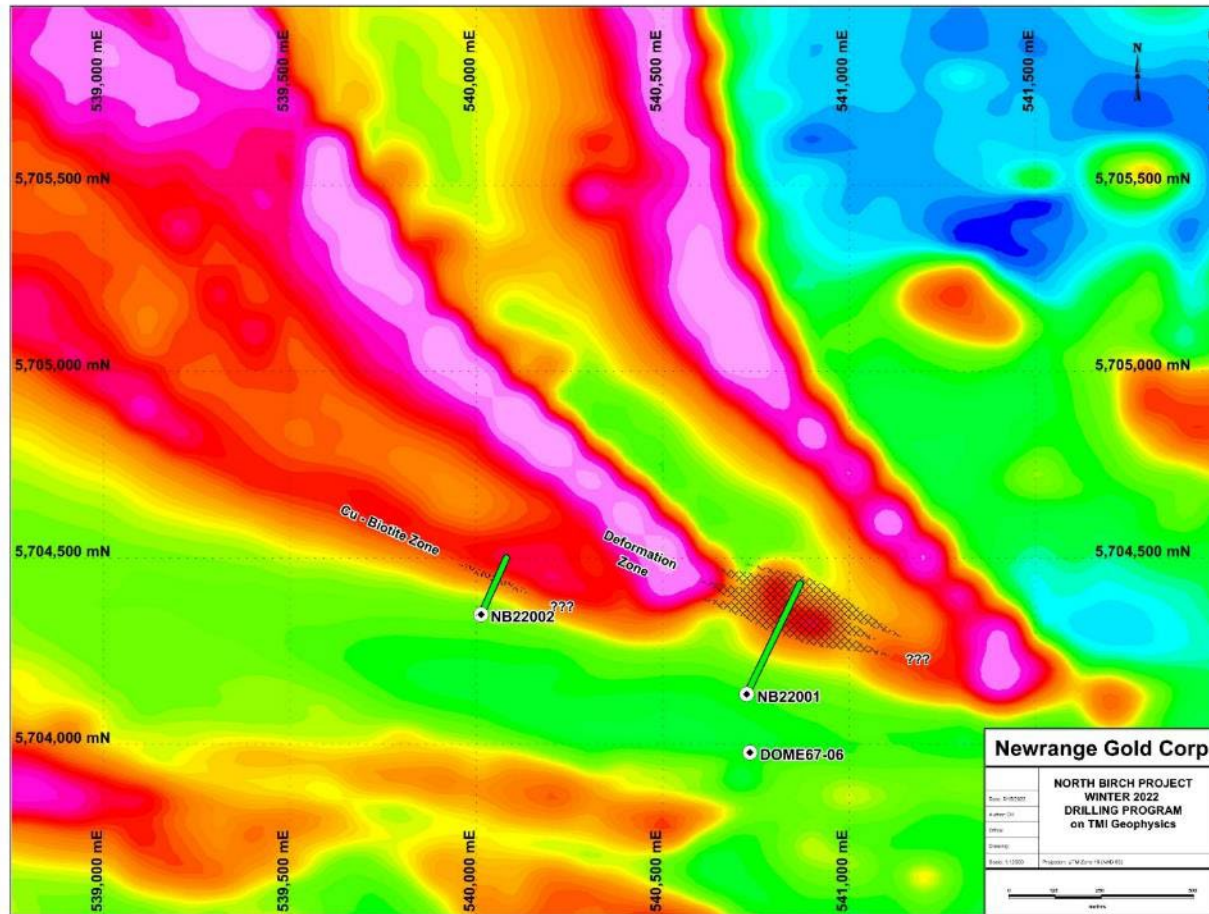


North Birch IP Survey

- 73.7 line kilometres of Induced Polarization over 7km of strike length
- Detected several strong chargeability anomalies along the Primary Target Horizon
- Discontinuous pattern suggests sulphide mineralization rather than lithological source
- Complexity of anomalies at east end could reflect folding of iron formation
- Several strong drill targets for follow up



First Two Holes Drilled on 'Fold Nose'



- Hole NB22001 was drilled on the 'nose' of the fold structure and intersected a deformation zone >100 metres wide with folded IF, confirming structural interpretation

First Drill Hole Intersects Mineralized Structure

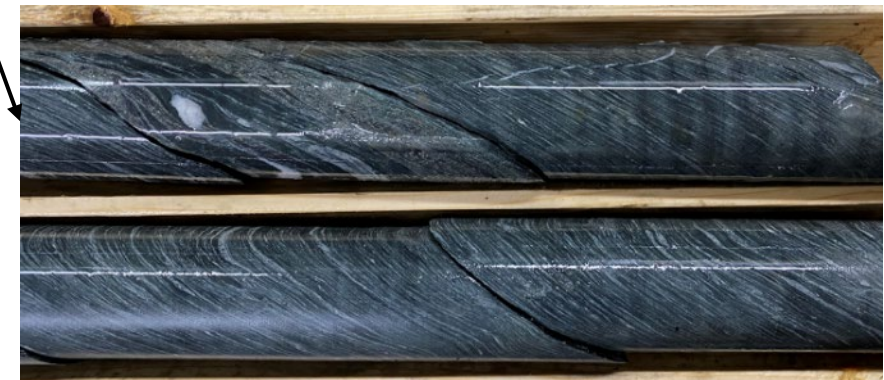
- Quartz, carbonate, and biotite alteration were observed in both holes and are common ingredients in Archean gold systems
- Locally strong pyrite mineralization occurs as disseminations and 'clots' within quartz veins and can be positive indicators for gold mineralization
- Hole bottomed in sheared, mineralized rock and needs to be drilled from the opposite direction to determine other 'side'
- Gold and copper assays are anomalous and increase downhole as shearing intensifies
- Hole NB22002 intersected chalcopyrite-pyrrhotite and strong biotite alteration but no significant deformation or gold assays



428-429m



446-449m



Upcoming Catalysts & News Flow

Argosy

- LiDAR survey of property
- Mapping & sampling, cleaning old trenches
- Diamond drilling on down-dip extension of veins

North Birch

- Mapping & sampling, prospecting
- Follow up diamond drilling on iron formation targets

Potential Acquisitions

- Specifically targeting Mexico, Peru & the USA



Contact Us

Email: info@pinnaclesilverandgold.com
www.pinnaclesilverandgold.com